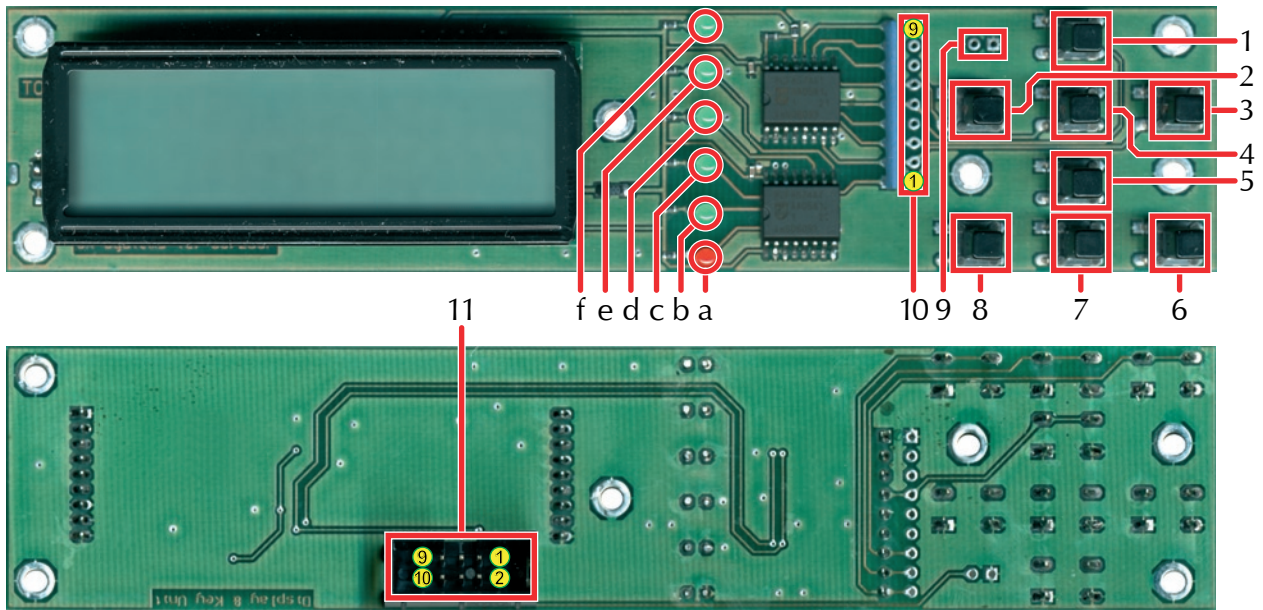


1 Connector description



board dimensions: 160x35 mm

Keys and Connectors	1	Key	Up
	2	Key	Left
	3	Key	Right
	4	Key	Enter
	5	Key	Down
	6	Key	Menu
	7	Key	Tx on/off
	8	Key	Backlight on/off
	9	2pin Header	Reset
	10	9pin Header	optional
	11	10pin Header	I ² C-Bus

LEDs	a	LED red	Tx on
	b	LED green	Encoder loaded
	c	LED green	FPGA loaded
	d	LED green	Upconverter locked (if connected)
	e	LED green	Ext. Tuner NIM locked (if connected)
	f	LED green	Power 5,0 V

2 Pin description

9 - Reset	
bridge to reset	

10 - optional	
1	GND
2	P3 - right
3	P2 - up
4	P1 - down
5	P0 - Enter
6	P4 - Left
7	P5 - Menu
8	P6 - Tx on/off
9	P7 - Backlight on/off

11 - I²C-Bus			
1	+5,0 V	2	5V
3	SDA	4	SDA
5	SCL	6	SCL
7	Reset	8	IRQ
9	GND	10	GND

Errata/corrections:

25.10.2010 First release.

The information in this manual was compiled with great care and to our best knowledge; nevertheless there might be some errors left in this document. We do not take legal or any other responsibility for the correctness of any information.

This document is protected by copyright law. All rights including copying, translation, microfilming as well as storage and processing in electronic systems are reserved.

We are happy to receive your comments and questions:

SR-Systems	Tel.: +49 (66 63) 91 88 66
Brüder-Grimm-Straße 130	Fax: +49 (66 63) 91 88 67
36396 Steinau	eMail: DATV@SR-Systems.de